

CWCAC Apartment Program

1000 Hwy 13

PO Box 430

Wisconsin Dells, WI 53965

Contact: **Gina Gray**

Property Manager

(608) 254-8353 Ext.243

**Joy Casperson**

Apartment Program Assistant

(608) 254-8353 Ext. 228

Website: [www.cwcac.org](http://www.cwcac.org)

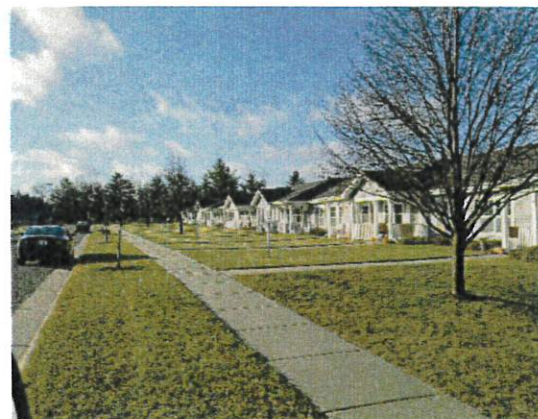
**Helping People Help Themselves**

## **ADAMS-FRIENDSHIP GIFT of YEARS APARTMENTS**

549 W North Street

Adams, Wisconsin

- 2 bedrooms, 1 bathroom, 1 level
- Rent includes heat, water, sewer, garbage service, lawn care, and snow removal
- Air conditioner (in wall)
- Refrigerator, stove, dishwasher, garbage disposal in all units; microwaves in some units
- Roll-in shower with grab bars or tub
- Washer and dryer or hookups in each apartment
- Attached garage with electric garage door opener
- Community room
- Mailboxes on site
- Some units handicap accessible
- Fixed rent with income restrictions on most units
- Smoke free property



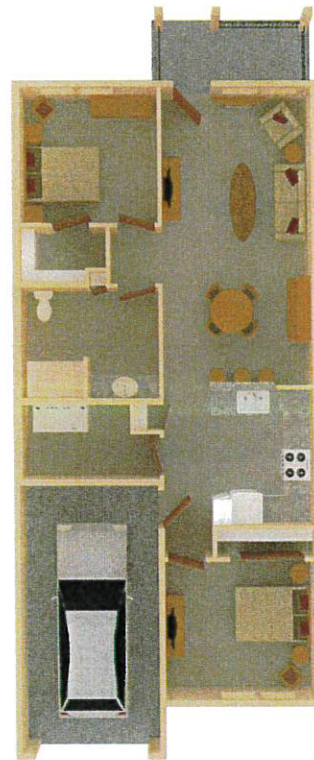
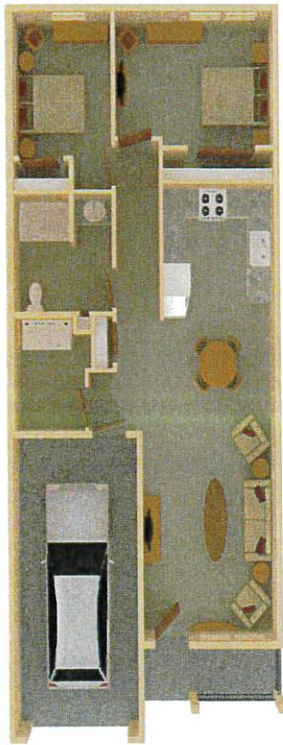
**For more information, please contact:**

**CWCAC INC. @ 608-254-8353**

CWCAC Inc. is an equal employment opportunity (EEO) and service provider.



# ADAMS-FRIENDSHIP GIFT OF YEARS APARTMENTS, ADAMS, WISCONSIN



## Room Sizes Layout 1: 2 Back Bedrooms

Garage: 22' x 11'

Living/Dining: 22'9" x 127"

Bedroom 1: 9'11 1/2" x 107"

Bedroom 2: 13'9 1/2" x 9'1 1/2"

Bathroom: 8'5" x 8'8"

Laundry: 5'2" x 8'5"

(Washer/Dryer may not be included. Some units have hookups only.)

## Room Sizes Layout 2: Split Bedrooms

Garage: 22' x 11'

Living/Dining: 20' 1/2" x 12'4"

Bedroom 1: 12'4"x 10'11"

Bedroom 2: 11'2"x 11'4"

Bathroom: 8'5" x 8'8"

Laundry: 8'9 1/2" x 5'10"

(Washer/Dryer may not be included. Some units have hookups only.)

Some units have back porches. Some units are wheelchair accessible. Room dimensions are approximate. Floor plans may vary. Total square footage for two-bedroom units ranges from 960 square feet to 1068 square feet. Furniture and vehicle not included.

For more information, please contact 608-254-8353

CWCAC Inc. is an equal employment opportunity (EEO) and service provider.

